



A Word from the BES-Net Team

Dear Members of the Biodiversity and Ecosystem Services Network,

The BES-Net Team extends their warm wishes to all of you in 2017. 2016 has been a very exciting year. It saw the establishment of BES-Net, with now 81 organizations on board that play a key role in the field of biodiversity and ecosystem services for sustainable development and more than 91 experts, who have agreed to respond to questions posted online.

Another important milestone for the project was the launch of the BES-Net web portal during the CBD COP 13, held last month in Cancun, Mexico. The launch was received with overwhelming interest, with the video coverage of the launch by the IISD reporting Services being viewed by more than 10 000 people. Please visit the [BES-Net Newsroom](#) for more. There has also been great interest for BES-Net received through social media, with now more than 4 400 page likes for the [BES-Net Facebook account](#).

In 2017, we are looking forward to implement the BES-Net Trialogues, facilitating fruitful discussions among the three BES-Net communities of policy, science and practice, and contributing to addressing specific policy issues to help unlock shifts in the development trajectory of societies towards sustainability. The first round of Trialogues, funded by the German Ministry for the Environment, Nature Conservation, Building and Nuclear Safety (BMUB), will focus on specific science-policy questions of relevance to IPBES.

This year, among other work on gender and full inclusion of indigenous and local knowledge holders in the Trialogues, we also look forward to the development of a French version of the BES-Net web portal, thanks to support from SwedBio at the Stockholm Resilience Centre.



About BES-Net

BES-Net is a capacity building “network of networks” that promotes dialogue among science, policy and practice for more effective management of biodiversity and ecosystems, contributing to long-term human well-being and sustainable development. Find out more [here](#).

Did you know?

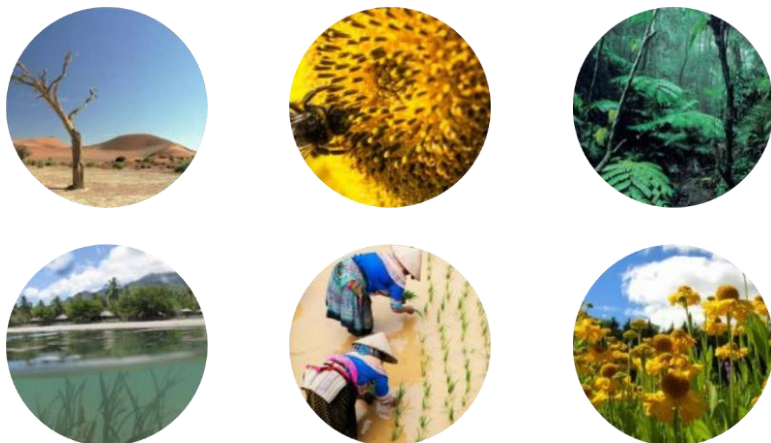
“Given that pollinator-dependent crops rely on animal pollination to varying degrees, it is estimated that 5-8 per cent of current global crop production, with an annual market value of \$235 billion-\$577 billion (in 2015, United States dollars) worldwide, is directly attributable to animal pollination.”
Source: [IPBES summary for Policy Makers of the assessment report on pollination, pollinators and food production](#).

In Focus

- Click [here](#) to view upcoming events in Biodiversity and Ecosystem Services.
- Click [here](#) for current jobs and internships in the field of Biodiversity and Ecosystem Services.

We would therefore like to thank all our donors and partners for their support so far, and are looking forward to the next phase of BES-Net!

The BES- Net Team



BES-Net Partners

The Network now counts [81 organizations](#) that play a key role in the field of biodiversity and ecosystem services. Contact us at info@besnet.world should you want to join.

Highlights from BES-Net Partners

IPBES releases its thematic Assessment on Pollinators, Pollination and Food Production



The assessment aims to assess animal pollination as a regulating ecosystem service underpinning food production in the context of its contribution to nature's gifts to people and supporting a good quality of life report is available here. It has been endorsed by the CBD COP 13 and is available [here](#), as is the corresponding [summary for policy makers](#).

IPBES releases the laid-out version of the IPBES Scenarios and Models Assessment



The laid-out version of all chapters and their executive summaries of the IPBES methodological Assessment of Scenarios and Models of Biodiversity and Ecosystem Services are now available to download on the [IPBES website](#), together with the corresponding [summary for policy makers](#).

Sharing Success in Ecosystem-based Adaptation: EbA Solution Portal Now Online



The [EbA Solution Portal](#) fosters sharing of field-proven knowledge and experience on [Ecosystem-based Adaptation](#) in different regions and ecosystems around the globe. It shows that inspiring and replicable solutions can be found everywhere on this planet and that EbA or “green solutions” are a state-of-the-art-reply to climate change impacts and deliver a multitude of benefits for societies, economies and environment.

This new global exchange platform under the [PANORAMA initiative](#) was officially launched at CBD CoP 13 in Cancún (for ENB IISD coverage of the event, click here). Now the portal is open to connect practitioners and decision makers and to solution providers from all countries, sectors and levels to share their stories and learn how others tackled challenges across the globe. For further information, please contact Mathias Bertram at mathias.bertram@giz.de.

BIOFIN 2016 Workbook release



At the CBD COP13 BIOFIN officially launched the new “[2016 BIOFIN Workbook: Mobilizing resources for biodiversity and sustainable development](#)” and the [CBD-BIOFIN Regional Nodes](#). The objective of the CBD-BIOFIN Regional Nodes is to provide technical support for financial planning and reporting to non-BIOFIN pilot countries based on the new 2016 BIOFIN Workbook methodology. The 2016 Workbook includes all the improvement and lessons learnt from the countries to reach a more efficient and result-based methodology. The BIOFIN methodology helps countries to set out a national process to build inter-ministerial partnerships, engage with the private sector, generate baseline data and policy recommendations on existing finance levels and future needs, developing and implementing finance plans and solutions to address national finance needs.

IRD calls for projects as part of its SEP2D Programme



“Sud Expert Plantes Développement Durable” (SEP2D) is an IRD programme looking at supporting development and international cooperation in 22 tropical countries. It aims at promoting scientific research on plant biodiversity in the countries of the South, through partnerships with economic players, civil society and actors involved in policy.

Two calls for project are still active, [APPEL 2 \(OPP2\)](#) and [APPEL 3 \(PRP\)](#), with respective deadlines of 1 and 6 March 2017.

Let us know if you would like your news to be featured in the next version of the newsletter:
info@besnet.world.

Jobs and Internships

IPBES Postdoctoral Program at UNAM (17. Jan 2017 – Morelia, Mexico)

The [National Autonomous University of Mexico \(UNAM\)](#) in collaboration with the Intergovernmental Science-Policy Platform on Biodiversity and Ecosystem Services ([IPBES](#)) offers one postdoctoral position for a candidate who would like to pursue a career in international environmental policy and the multiple values of ecosystems and biodiversity. Find out more and apply [here](#).

Programme Officer for Participation and Engagement at GBIF (31. Jan 2017 – Denmark)

The [GBIF Secretariat](#), located in Copenhagen, seeks an experienced Programme Officer to provide vision and leadership in support for GBIF’s community of participating node teams around the world. For more details on the description of assignment and application click [here](#).

Senior Programme Officer, Global Drylands Initiative at IUCN (01. April 2017 – Burkina Faso)

IUCN is recruiting a Senior Programme Officer West Africa (SPO) who is to lead the development of the GDI in the PACO region and ensure smooth delivery of a portfolio of projects, ensuring their alignment with the GDI programme strategy and IUCN’s wider programme. Find out more and apply [here](#).

Other Job Opportunities

The BES-Net web-portal provides access to a [list of jobs and internships](#) available in the field of biodiversity and ecosystem services.

Biodiversity and Ecosystem Services Network

Website: www.besnet.world

Email: info@besnet.world

Copyright © BES-Net



SwedBio
A programme at Stockholm Resilience Centre

